



# Community Newsletter

November 2024

Lumea  
Transgrid Group

Welcome to the first newsletter brought to you by the Snowy 2.0 Transmission Connection Project (STCP). You are receiving this as one of the valued residents of Tumbarumba and Elliott Way. As the project progresses, we hope to keep you up-to-date on all the local goings on both at the project and in the community. The support of local communities is an important part of the success of this nation-shaping project.

The project will connect Snowy Hydro 2.0 into the National Electricity Market, ensuring that the renewable energy generated and stored can be distributed within minutes when needed.

To do this we will:

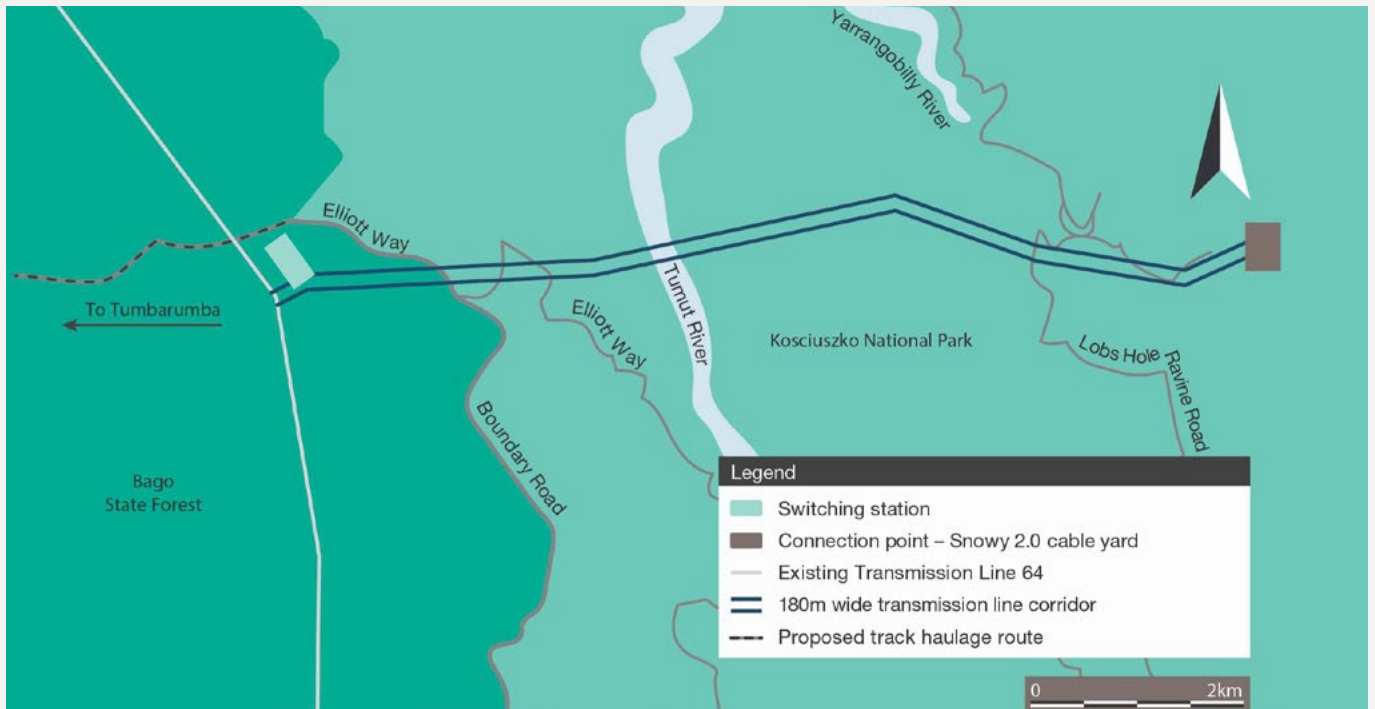
- Construct 9km of new high voltage transmission lines, spanning the Tumut River
- Construct a switching station located in the Bago State Forest, Maragle
- Upgrade access tracks to the new switching station and transmission line structures.

LUMEA™ is Australia's leading infrastructure and energy services provider focused on servicing the renewable energy industry. Sitting as part of the Transgrid group, Lumea focuses on developing competitive commercial solutions and applying new technologies for customers across the eastern states of Australia.

# Where will this be built?

The transmission lines will be built from the Snowy 2.0 cable yard location at Lobs Hole in Kosciuszko National Park (KNP), spanning west across Talbingo Reservoir to the new switching station at Maragle,

adjacent to Transgrid's existing Line 64 in Bago State Forest. Line 64 is the point of connection to the grid. The project will also provide a connection point into Transgrid's southern network.



## Latest news

After a shut-down over winter, work re-started at both Lobs Hole and Maragle in early September. The focus of work at Lobs Hole continues to be the environmental monitoring and clearing required to build access tracks and to establish the easement. Before any clearing can take place, a team of ecologists monitor for wildlife movements for 28 days. Any nesting or breeding sites found within the area to be cleared are carefully managed. All clearing is complete at the Maragle site.

If you would like to know more about how we minimise our impact on native flora and fauna read the Environmental Management Fact sheet available on our [website](#).

Access tracks are being built and are now visible from Elliott Way. Construction preparation has begun with foundations for the switchyard and transmission towers being poured over the coming months.

The UGL team previously working from the old Snowy Valleys Council building have moved permanently to the Maragle site. We are proud to share that the site offices are 100% solar powered, with diesel generators in place for back-up. This is an important step to both mitigate our impact on the environment and contribute to the transition to renewable energy. Teams are also working on site at Lobs Hole, with people staying on-site, in Tumbarumba or Adaminaby.



# Looking ahead

Over the next 6 months, activity on site will shift to focus on construction of the switchyard. The timeline below shows what is planned through to

February 2025. This will mean increased numbers of construction workers staying in Tumberumba and traffic along Elliott Way.

## Snowy Transmission Connection Project Six month look ahead – September 2024 to February 2025\*

| Project Activity              | Community Impact                        | September 2024                  | October 2024                    | November 2024                   | December 2024 | January 2025 | February 2025 |
|-------------------------------|---|---------------------------------|---------------------------------|---------------------------------|---------------|--------------|---------------|
| Clearing                      |   | [Green bar spanning all months] |                                 |                                 |               |              |               |
| Access Tracks                 | Traffic Management along Elliott Way    | [Green bar spanning all months] |                                 |                                 |               |              |               |
| Switchyard Foundations poured | Increased trucks to site                | [Green bar spanning all months] |                                 |                                 |               |              |               |
| Electrical installation       | Delivery of equipment to Switchyard     |                                 | [Green bar spanning Oct to Feb] |                                 |               |              |               |
| Electrical building           | Delivery of building to Switchyard      |                                 |                                 | [Green bar in Nov]              |               |              |               |
| Tower Foundations built       | Increased trucks and deliveries to site |                                 |                                 | [Green bar spanning Nov to Dec] |               |              |               |

\*Subject to change.

### Changes to traffic along Elliott Way

To manage the impact of traffic along Elliott Way we have put the following plans in place:

- Workers focused on the switchyard works travel to site by minibus at the start and finish of shifts. Carpooling is also in place for workers who are working on access tracks and monitoring work across the site.
- Deliveries are planned to be made outside school-bus times.
- An arrangement for road maintenance is in place with Snowy Valleys Council.

The construction of access tracks is now underway alongside Elliott Way. To manage the safety of motorists, travel along Elliott Way is now reduced to a single lane at Nurenmerenmong (before O'Hares campground).

There will be an increase in light and heavy vehicle movement along Elliott Way and occasional full road closures to allow for the safe movement of heavy vehicles and equipment. Variable speed limit changes are in place.

If you would like to know more about how we will manage roads and traffic for the project see the Roads and Traffic Fact sheet available on our [website](#).

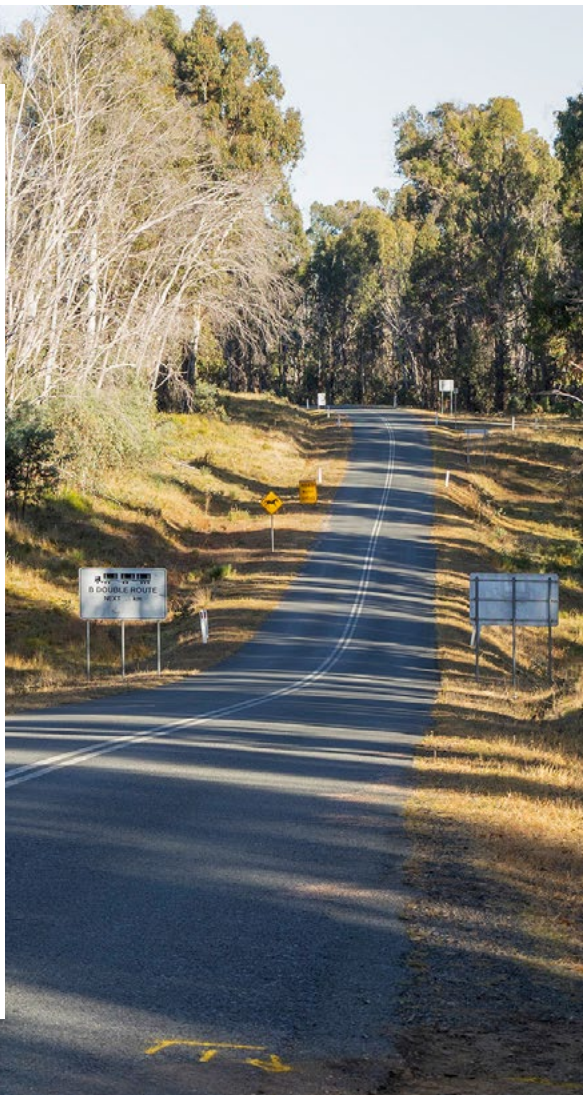


Image credit: Michael Egan



## Community investment: you spoke, and we heard you

Lumea was proud to host a workshop of over 70 Tumbarumba residents on 21st August 2024 to provide feedback about the priorities for community investment over the next 2 years. We heard from 10 local community groups about 13 different projects that are looking for project funding. It was an inspiring evening, hearing from passionate groups about the ideas and vision they have for the Tumbarumba Community.

Three projects have been successful in receiving financial support from Lumea. Congratulations to the following organisations:

- Cycle Tumbarumba – \$32,000 for the purchase and installation of a Solar and Battery system for Mt Tumbarumba Trails Facility
- Tumbarumba Start Strong Pre-school – \$88,000 for landscaping of the outdoor playground

- Tumbarumba Public School P&C – \$80,000 for the upgrade of playground equipment

Read more about these projects in our next newsletter.



## Saving our precious wildlife

Lumea is proud to support local wildlife rescue organisation Saving Our Native Animals Inc. (SONA). SONA is a volunteer run organisation who are passionate about rescuing, rehabilitating, and releasing native animals back into the wild in the Batlow, Tumbarumba, Khancoban and surrounding areas. We have funded the development of a website for SONA by [Kate Howarth Digital](#) from Tumut. The website will help to raise awareness of their work and attract much needed volunteers. To learn more about their work and volunteer opportunities check out their brand-new website [sona.org.au](http://sona.org.au).

### Get in touch!

If you have questions or feedback about the project, you can contact us on 1800 674 022 or [communities@lumea.com.au](mailto:communities@lumea.com.au). Detailed information is available on our website.

**Scan the QR code to find our website.**

